



Catalog Number	
Notes	Type

FEATURES

INTENDED USE

The Synergy® CONFIG software is a PC-based Windows™ application that provides a means to configure a Synergy controller or network of Synergy controllers. Controller configurations can be created from scratch, opened from a saved file or uploaded from the controller and edited while off-line. An on-line mode also allows for real-time monitoring and override of load status and diagnostic functions. The software allows the user to program all attributes of the controller, plus add Script Logic statements.

ATTRIBUTES

This application utilizes a familiar Windows™ graphical user interface that has been designed to provide easy access to all system data through the use of a simple tab-based navigation scheme. The tab format permits the user to reach most configuration screens with only a single click of the mouse. Wherever appropriate, the use of pull-down menus further simplifies the system configuration and minimizes the need for the user to be proficient with keyboard-based commands. A complete context-sensitive help file is provided to further assist the operator. Access privileges for different software features can be defined for multiple users through the use of an administrator-defined login I.D. and password for each user.

ELECTRICAL

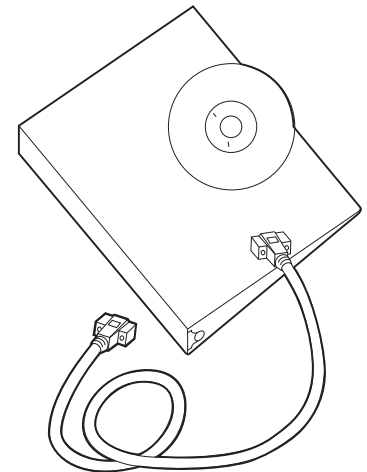
Connection to the system can be made with the provided RS-232 serial communications cable by using the DB-9 connector on the face of the controller. Desktop PC's may be connected directly to the Synergy panel network with a SYA NIC card installed in the PC via RS-485 ARCNET network cable, a SYA ROUTER connected to the Synergy ARCNET network and a Ethernet LAN, or with an Ethernet card installed in the PC and directly connected to Synergy panels via an Ethernet LAN. Wireless and Intranet connections require either Ethernet method mentioned previously. A connection can also be made from a remote site using standard analog telephone lines via the PHONE option in the controller and a PC equipped with a telephone modem.

INSTALLATION

The CONFIG application requires a minimum 166MHz Pentium™ class P.C. running Windows™ 95, 98, NT 4.0, Millennium, 2000, or XP operating system, with 128 MB RAM, 30 MB free disk space, and 800x600 video resolution. One free PCI expansion slot and SYA NIC PCI adapter card (available as a separate accessory) is required for direct connection to the Synergy ARCNET network. SYA ROUTER (also available as a separate accessory) is required for connection through the building Ethernet LAN, Intranet, or wireless connection when the Synergy panels are connected via RS-485 ARCNET. Direct connection to SYSC MLX controllers using the internal Ethernet port introduced in September of 2007 eliminates the need for a SYA ROUTER on new systems. Internal Ethernet connections offer the same connection options as Ethernet connected to a SYA ROUTER.

Lighting Control Systems

SYSW CONFIG



ORDERING INFORMATION

Choose the boldface catalog nomenclature that best suits your needs and write it on the appropriate line. Order accessories as separate catalog number.

Example: **SYSW CONFIG**

SYSW CONFIG

Series

SYSW CONFIG Synergy configuration software

Accessories

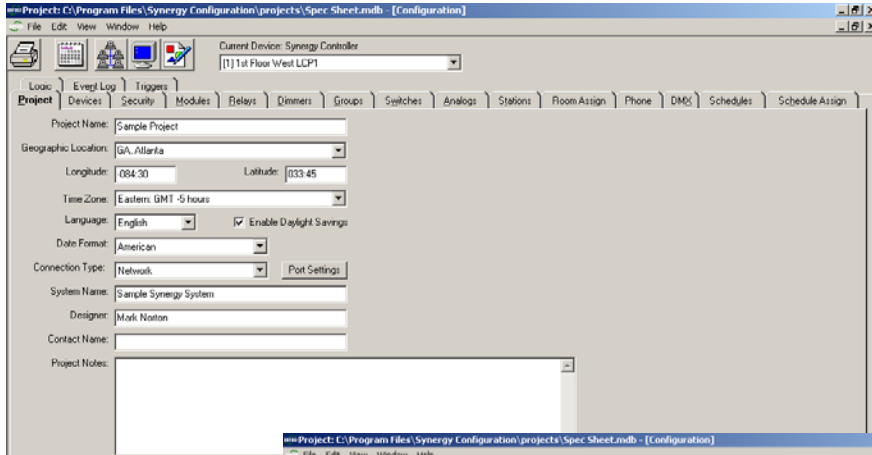
Order as a separate catalog number.

- SYA NIC PCI** Network interface card, requires one expansion slot in PC (see sheet SY600).
- LSA PC MON#** Personal computer with monitor where # = monitor size in inches.
- SYSW GRAPHICS** Integrated graphic control and monitoring add-in.
- SYSW SCREEN** Factory-created floor plan graphic screen, specify quantity.
- SYA ROUTER** Ethernet-to-ARCNET network router

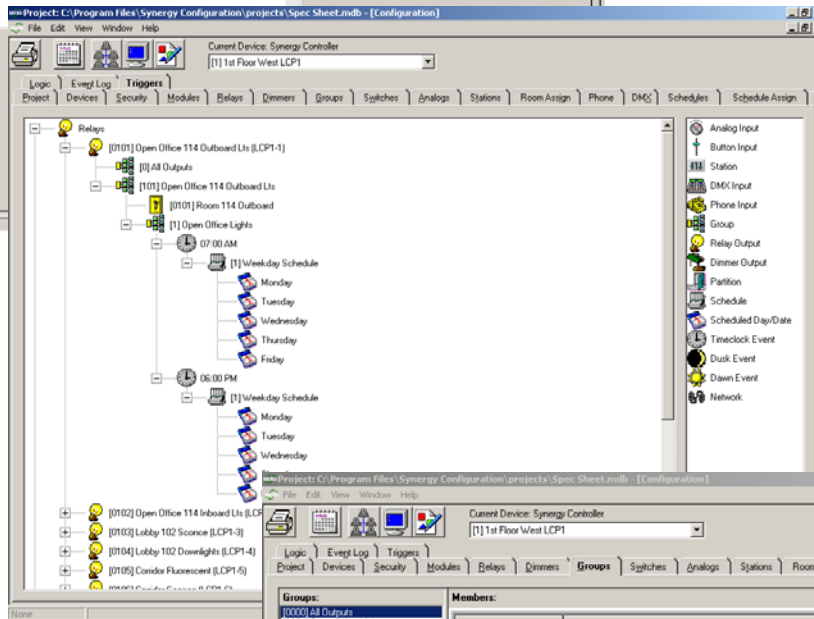
FUNCTIONAL

Typical CONFIG Screens

Project Screen



Relays Screen



Edit Group Screen

