



Catalog Number	
Notes	Type

## FEATURES

### INTENDED USE

The Synergy<sup>®</sup> GRAPHIC software module adds real-time control and monitoring capabilities to a Synergy system through the use of a flexible graphical user interface. The optional GRAPHIC module runs as a fully integrated component of the SYSW CONFIG software, which may be installed on a desktop, laptop computer, or server connected to a Synergy system via a direct serial, RS485, modem, Ethernet LAN, Intranet or wireless network connection.

### ATTRIBUTES

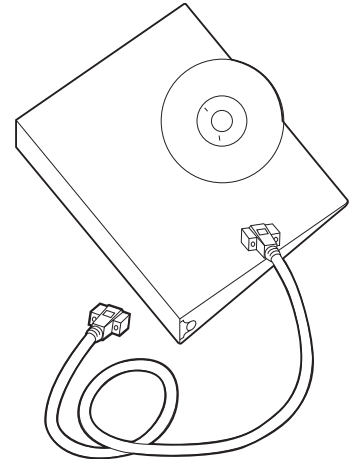
The GRAPHIC module provides intuitive point-and-click control of loads with status feedback and remote diagnostic capability. Simple setup and configuration options allow the creation of floorplan-based, button-based, or combination screens. Flexible control options allow graphical options to directly monitor and override all system inputs (switches, photocells, digital stations), outputs (relays, dimmers, controllable circuit breakers), room partitions, and load groups. The number of control objects per screen is limited only by the monitor resolution, and there may be a maximum of 32,767 screens. Touch-screen operation is available with the use of compatible hardware. Background graphics may be imported in a variety of formats from other applications. The software is BACnet compliant and also may be used to control other manufacturer's AI, BI, BO, AO, BV and AV objects on the BACnet network.

### INSTALLATION

The GRAPHIC application requires SYSW CONFIG software and a minimum 266 MHz Pentium II™ class P.C. running Windows™ 95, 98, NT 4.0, Millennium, 2000, or XP operating system, with 128 MB RAM, 40 MB free disk space, and 800 x 600 video resolution. Background graphical images are created external to the application using any available graphic editor program and may be imported as bmp, dib, jpg, or gif type file formats. An available RS-232 port is required for serial connection to the system. One free PCI expansion slot and SYA NIC PCI adapter card (available as a separate accessory) is required for direct connection to the Synergy RS-485 ARCNET network. SYA ROUTER (also available as a separate accessory) is required for connection through the building Ethernet LAN, Intranet or wireless connection when the Synergy panels are connected via RS-485 ARCNET. Direct connection to SYSC MLX controllers using the internal Ethernet port introduced in September 2007 eliminates the need for a SYA ROUTER on new systems. Internal Ethernet connections offer the same connection options as Ethernet connected to a SYA ROUTER.

Lighting Control Systems

# SYSW GRAPHIC



## ORDERING INFORMATION

Choose the boldface catalog nomenclature that best suits your needs and write it on the appropriate line. Order accessories as separate catalog number.

Example: **SYSW GRAPHIC**

### SYSW GRAPHIC

<b>Series</b>	
<b>SYSW GRAPHIC</b>	Synergy graphical user interface (requires SYSW CONFIG for operation)

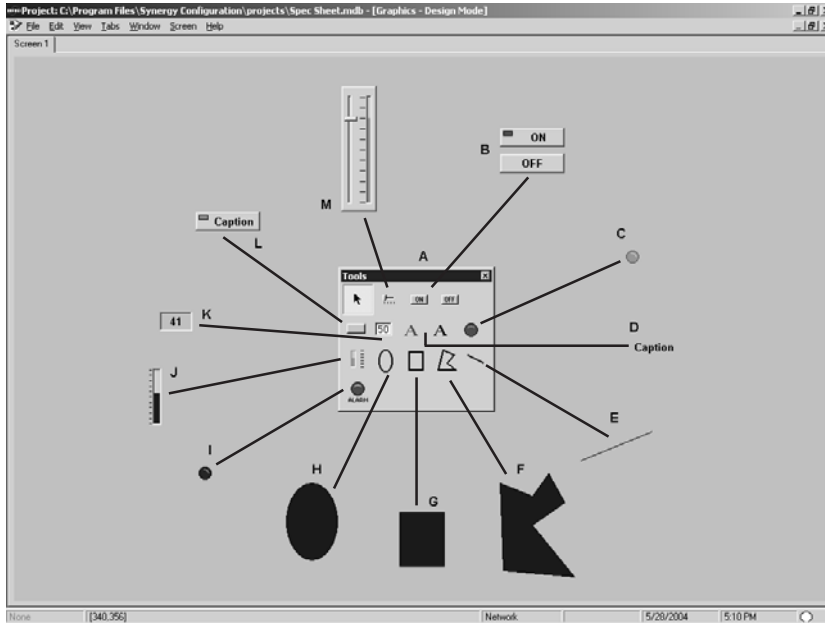
### Accessories

Order as a separate catalog number.

- SYSW SCREEN** Factory-created floor control points on user supplied floor plan graphics. Specify quantity.
- SYA ROUTER** Ethernet-to-ARCNET network router
- SYA NIC PCI** Network interface card, requires one free PCI expansion slot in PC.

# SYSW Graphic Lighting Control System

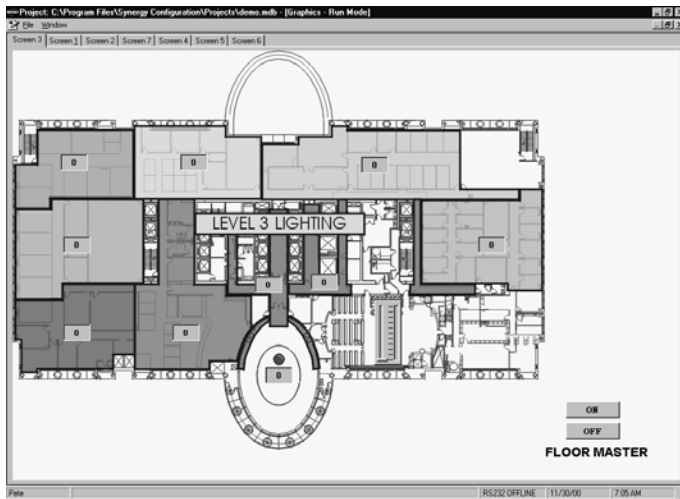
## FUNCTIONAL – DESIGN MODE



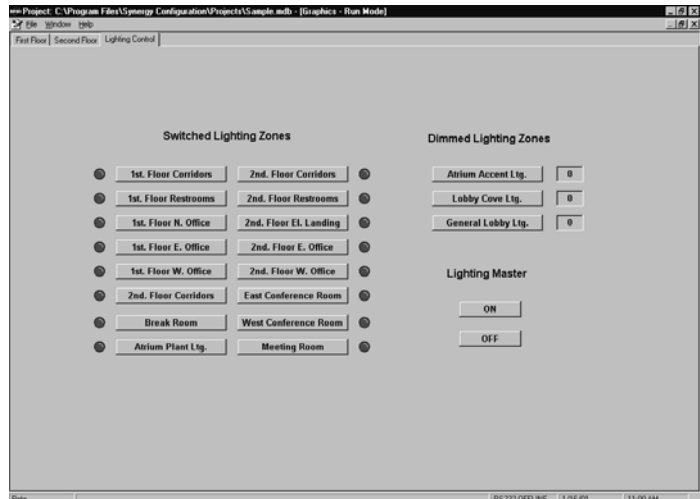
- A. Tool bar provides access to a variety of control, text and navigation elements for use in setting up graphical control and monitoring screens. User interface is simple drag and drop. The individual elements are sizable with a variety of appearance options including outline and fill colors.
- B. Dedicated ON/OFF function buttons with user-selectable control functions.
- C. Simulated LED indicator for status indication and user-selectable control functions.
- D. Text may be used for simple labeling and/or provide active control and status functionality.
- E. Line draw function.
- F,G,H. Polygon, rectangle and oval draw function for creation of hot spots used for control and/or screen navigation functions.
- I. Alarm indicator displays Synergy panel override status and diagnostic information.
- J. Bargraph indicator for status indication and user-selectable control of dimmed loads.
- K. Numerical status box for status indication and user-selectable control functions.
- L. Multi-function button can be used for preset activation, ON/OFF or room partition control functions with user-selectable status indicator.
- M. Slide control with bar-graph provides real time dimming and status indication.

## FUNCTIONAL – RUN MODE

### Typical floor plan screen



### Typical button screen



### Maximum Image Size\*

Screen Res	Pixels
800 x 600	776 x 476
1024 x 768	1000 x 644

\* Importable image file types are .BMP, .DIB, .JPG and .GIF.



An AcuityBrands Company

Sheet #: SYSW-GRAPHIC

©2000 Acuity Brands Lighting, Inc., Rev. 10/23/07

**Synergy Lighting Controls**

1335 Industrial Blvd, Conyers, GA 30012

Phone: 800-533-2719

www.synergylightingcontrols.com