

Industrial Luminaire



APPLICATIONS

Designed to provide maximum efficiency lighting for industrial and commercial environments, the HIS specialty industrial luminaire offers a variety of photometry to suit a range of application needs.

FEATURES

This efficient, industrial luminaire is available in 4' and 8' nominal lengths.

Rugged industrial housing provides added durability.

Plastic joiner clips are provided for continuous row configuration for true reflector alignment.

High-gloss, baked white enamel finish.

Screw-on endplates.

Channel connectors furnished standard.

Optional clamp-on hangers available for ease of installation.

Wireguard available with some lamp and reflector combinations.

SPECIFICATIONS

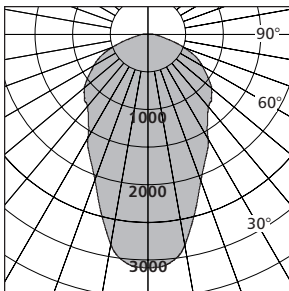
HOUSING: Formed from cold rolled, pre-painted steel. Five stage iron-phosphate pretreatment ensures superior paint adhesion and rust resistance. Painted parts finished with high-gloss, baked white enamel.

REFLECTOR: Miro® enhanced specular aluminum with a total reflectivity of 95%.

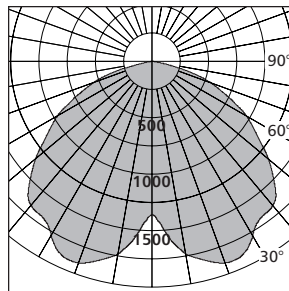
MOUNTING: The HIS series fixture is suitable for surface mounting, as well as for suspended mounting with stems, threaded rods, or chains.

LAMP HOLDERS: T8 lamps are secured with locking lampholders.

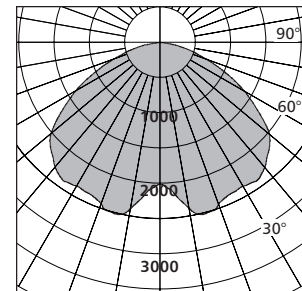
PHOTOMETRY



HISS04XFTTSO42EP11
Test #11307
Fixture Efficiency: 94.8%
SC Across: 0.8, SC Along: 1.2

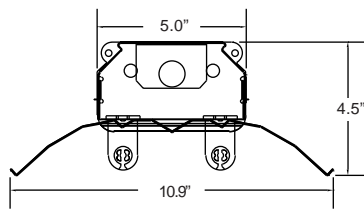


HISS04XSWSO42EP11
Test #11272
Fixture Efficiency: 90.2%
SC Across: 1.8, SC Along: 1.2

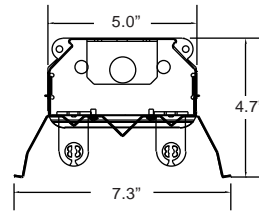


HISS04XSWSO43EP11
Test #11269
Fixture Efficiency: 89.0%
SC Across: 1.7, SC Along: 1.3

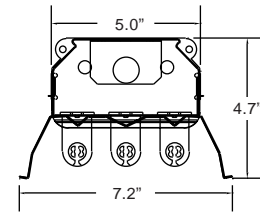
CROSS SECTIONS



FTT

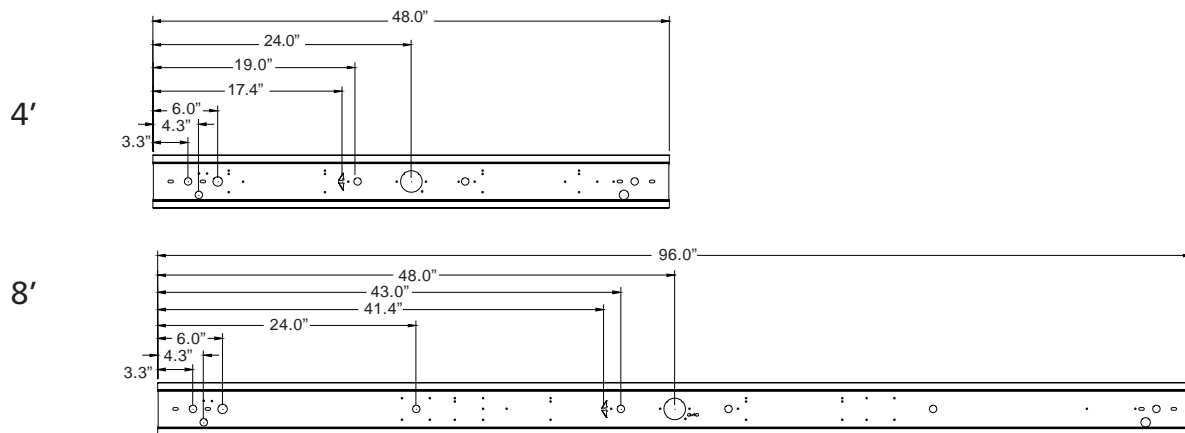


SWW



SWW

CHANNEL DIMENSIONS



Drawings for dimensional detail only. Subject to change without notice.

MODELS AVAILABLE

| Fixture Schedule | | | Fixture ID# | | |
|--|------------|---|---|--------------------------|--|
| <input type="checkbox"/> | HIS | <input type="checkbox"/> | <input type="checkbox"/> | <input type="checkbox"/> | <input type="checkbox"/> |
| Fixture Series | | Size | Photometry | | Lamp Configuration |
| 2 - Tandem of 2 | | 04 - 4' 08 - 8' | FTT - Focus* NHH - Normal, white reflector SWW - Spread | | O42 - 2 F32T8*** O43 - 3 F32T8*** O45 - 4 F32T8**** O47 - 6 F32T8**** |
| Reflector Material | | Uplight | Ballast Type | | Ballast Quantity |
| D - White metal X - Miro® enhanced aluminum | | S - No uplight P - Perforations** U - Uplight slots** | EP - Standard electronic LP - Low-power electronic MP - Medium-power electronic YP - High-power electronic | | 1 - 120V 2 - 277V 3 - 347V |
| Ballast Voltage U - 120V/277V | | | | | |

*Available with O42 and O45 lamp configurations only.

**Available with SWW photometry only.

Available with 4' fixture only. *Available with 8' fixture only.

Not all photometry options available with every lamp configuration.

Not all ballast types and quantities available with every lamp configuration.

For additional ballast options please contact your local Holophane sales representative.