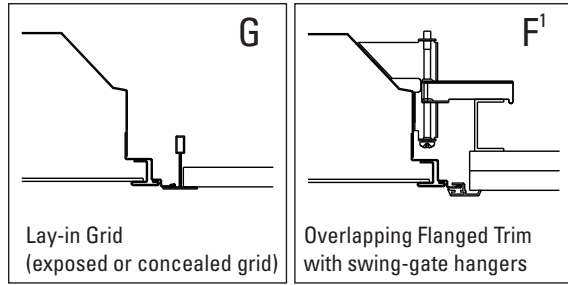




# HT 1'x4' Static Troffer, Straight Lamps

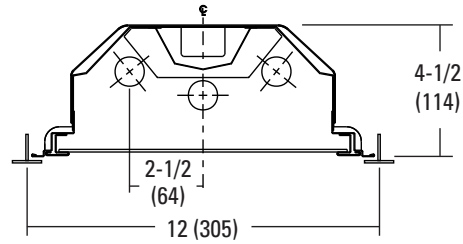
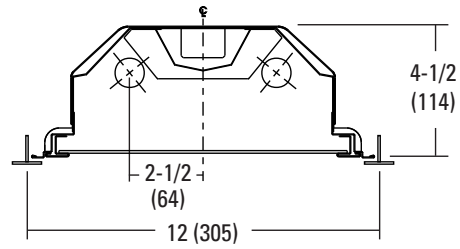
## MOUNTING DATA

Continuous row mounting of flanged units requires CRE and CRM trim options (see Options).



## DIMENSIONS

Inches (millimeters). Subject to change without notice.



**NOTE:**

1 Recommended rough-in dimensions for F trim fixtures 12"x48" (Tolerance is +1/4", -0"). Swing-gate range 1-9/16" to 3-3/4", span 10-3/4" to 14-3/4".

## PHOTOMETRICS

Calculated using the zonal cavity method in accordance with IESNA LM41 procedure. Floor reflectances are 20%. Lamp configurations shown are typical. Full photometric data on these and other configurations available upon request.

**HT 2 32 A 12**

Report: **LTL12537**

LUMENS PER LAMP: **2850**

Luminaire Efficiency: 76.3%

**Coefficients of Utilization**

RCR	pw	Coefficients of Utilization									
		80%		50%		30%		20%		10%	
		70%	50%	30%	50%	30%	10%	50%	30%	10%	
0	91	91	91	85	85	85	81	81	81		
1	84	81	78	76	74	72	73	71	69		
2	77	72	67	67	64	61	65	62	59		
3	71	64	58	60	56	52	58	55	51		
4	66	57	51	55	50	46	53	48	45		
5	61	52	46	49	44	40	48	43	40		
6	57	47	41	45	40	36	44	39	35		
7	53	43	37	41	36	32	40	35	32		
8	49	39	33	38	33	29	37	32	29		
9	46	36	31	35	30	26	34	30	26		
10	43	34	28	33	28	24	32	27	24		

**Zonal Lumen Summary**

Zone	Lumens	% Lamp	% Fixture
0° - 30°	1525	26.8	35.0
0° - 40°	2434	42.7	56.0
0° - 60°	3753	65.8	86.3
0° - 90°	4351	76.3	100.0
90° - 180°	0	0.0	0.0
0° - 180°	4351	76.3	100.0

